

# One Earth Solar Farm

**Volume 6.0: Environmental Impact Assessment and Habitats  
Regulations Information [EN010159]**

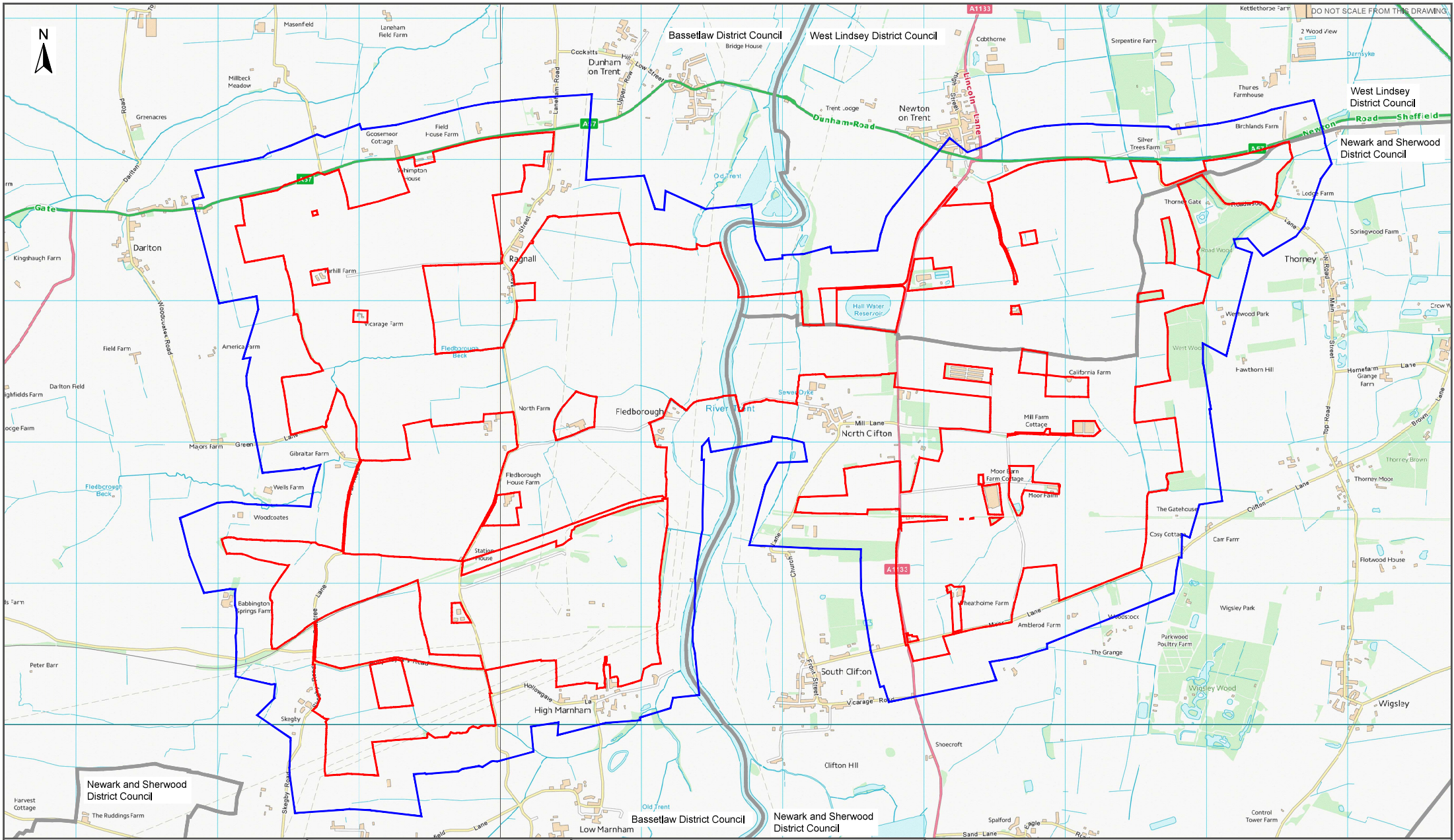
**Environmental Statement Volume 3 – Figure 8.1 – 8.7**


**September 2025**

Document Reference: EN010159/APP/6.20.1

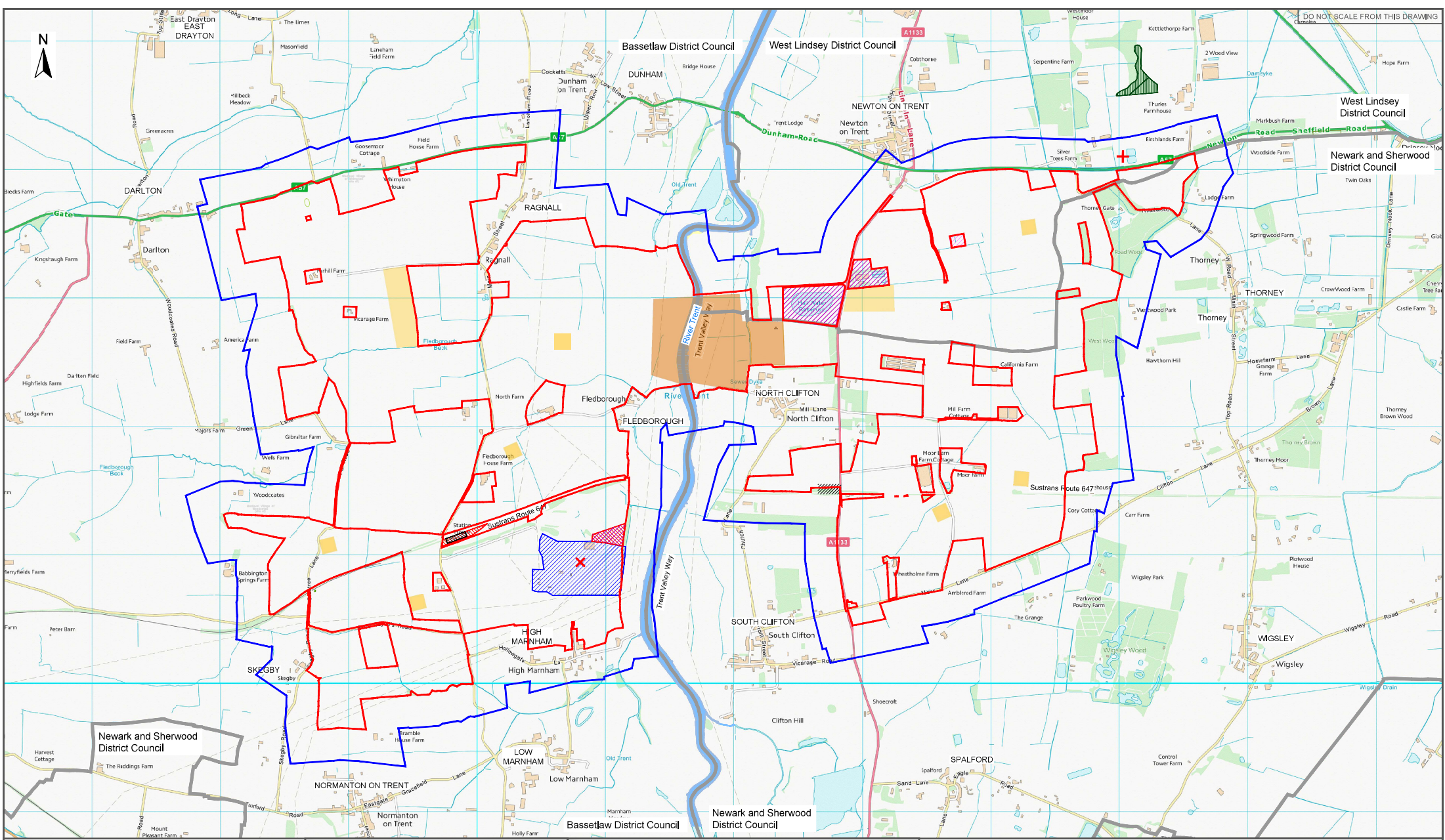
Revision 02 (Clean)

Infrastructure Planning (Applications: Prescribed Forms and Procedure) Regulations 2009  
– Reg 5 (2) (g)



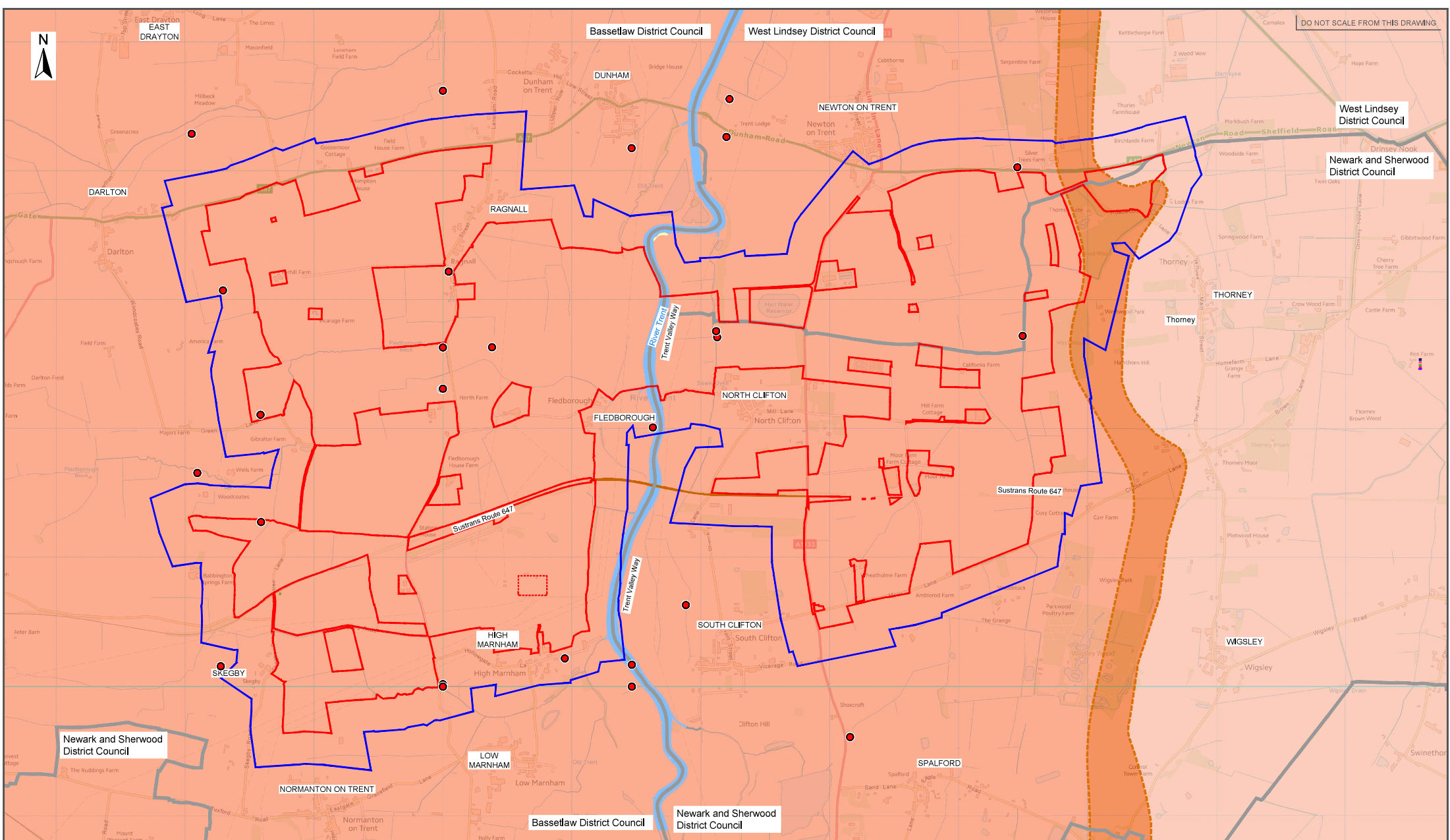
	Client  One Earth Solar Farm Ltd		Drawing Title  Figure 8.1 Study Area		<div>Legend:</div> <div><div></div> Order Limits</div> <div><div></div> Study Area (250m buffer outside Order Limits)</div> <div><div></div> Boundary of district borough unitary region</div>
	Project Name  One Earth Solar Farm		Drawing Number  EN010159/APP/6.20/8.1		
			Revision  C02		
	Planning Inspection Scheme Ref:EN010159		Drawing Date  10.02.2025		
	Environmental Statement Volume-2				






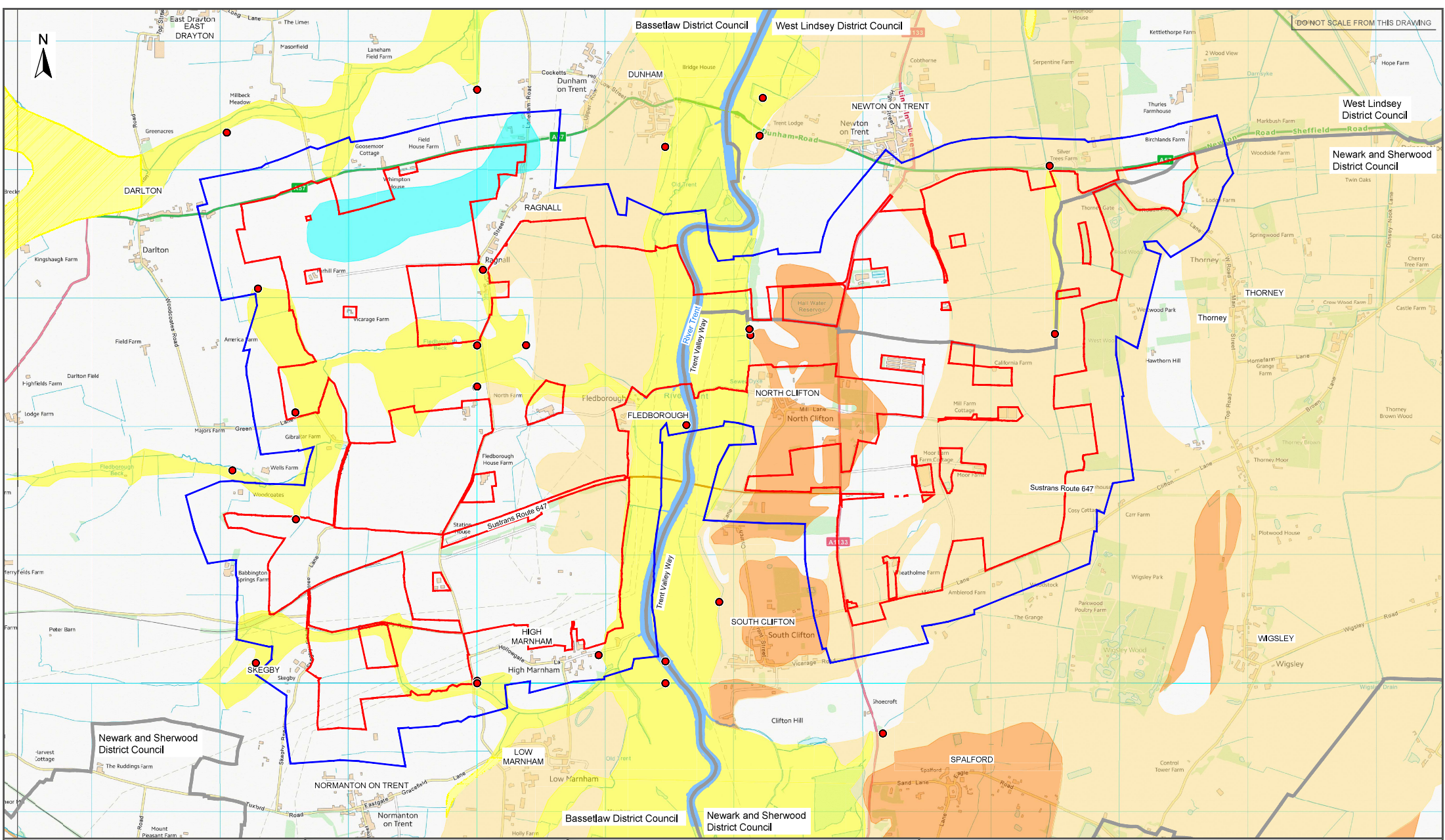
	Client  One Earth Solar Farm Ltd		Drawing Title  Figure 8.2 Landfill Sites, Waste Management Sites and Sites of Potential Contamination	
	Project Name  One Earth Solar Farm		Drawing Number  EN010159/APP/6.20/8.3	Revision  C03
	Planning Inspection Scheme Ref:EN010159		Drawing Date  10.02.2025	
	Environmental Statement Volume-2			
<div>Legend:</div> <div><div><div><div></div><div>Order limits</div></div><div><div></div><div>Route of Historical Railway</div></div><div><div></div><div>Study Area (250m buffer outside Order Limits)</div></div><div><div></div><div>Boundary of district borough unitary region</div></div><div><div></div><div>Location of Historical Railway Station</div></div><div><div></div><div>Location of High Marnham Power Station</div></div><div><div></div><div>Location of water treatment works</div></div><div><div></div><div>Location of oil well compound</div></div><div><div></div><div>Location of pumping station</div></div><div><div></div><div>Location of Historical landfill site</div></div></div><div><div><div></div><div>Location of Historical waste management facility (Point location, not site area)</div></div><div><div></div><div>Location of licensed waste management facility</div></div></div></div>				






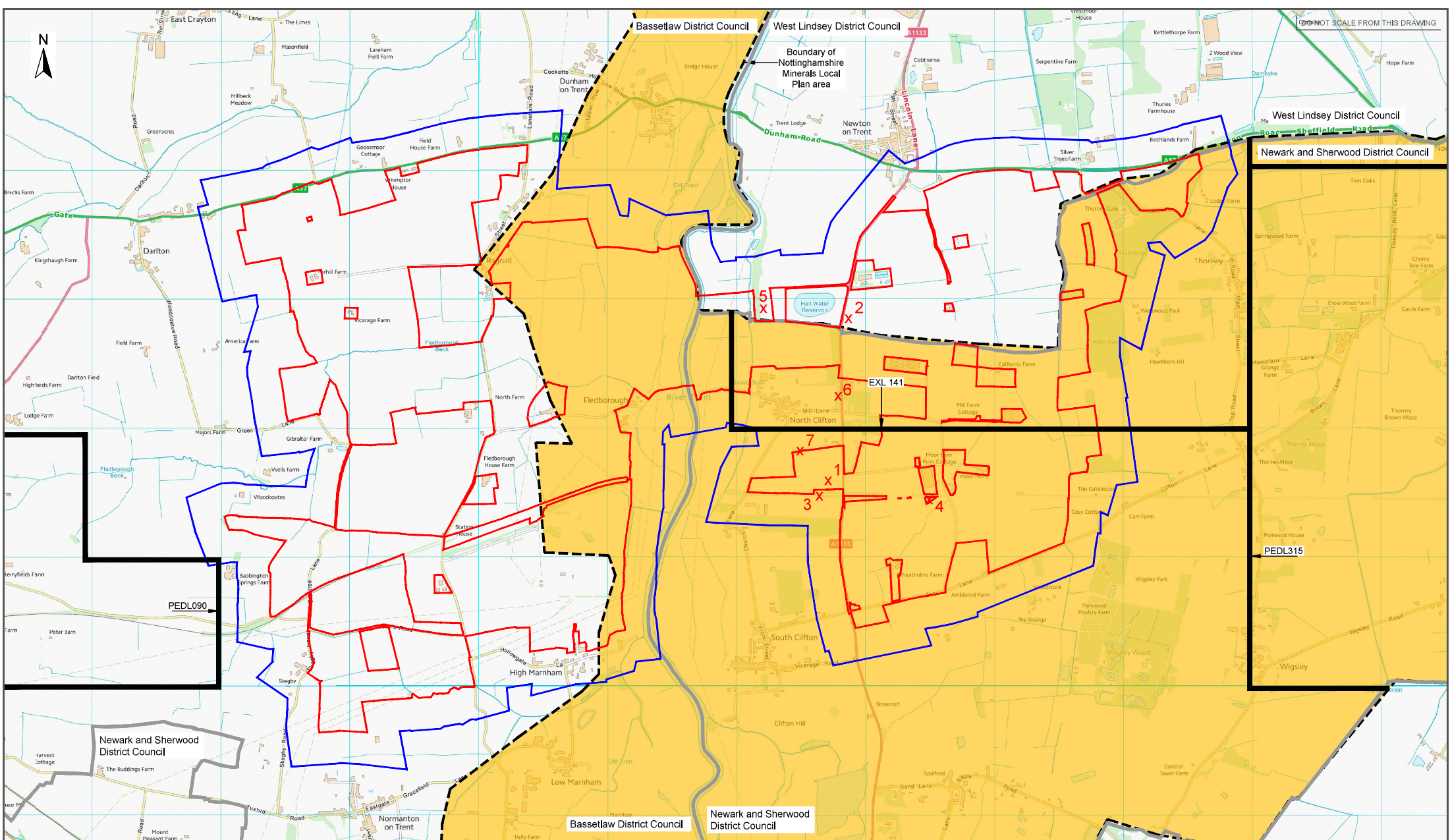
	Client		Drawing Title		<p>Legend:</p> <ul style="list-style-type: none"><li>Order limits</li><li>Study Area (250m buffer outside Order Limits)</li><li>Boundary of district borough unitary region</li><li>Geological hazards from compressible ground (moderate risk)</li></ul> <p><u>Bedrock Geology</u></p> <ul style="list-style-type: none"><li>Sandstone Mudstone formation</li><li>Penarth Group - Mudstone</li><li>Mercia Mudstone Group</li></ul>
	One Earth Solar Farm Ltd		Figure 8.3 Bedrock Geological Units and Geological Hazards		
	Project Name		Drawing Number	Revision	
	One Earth Solar Farm		EN010159/APP/6.20/8.3	C02	
	Planning Inspection Scheme Ref:EN010159		Drawing Date		
Environmental Statement Volume-2		10.02.2025			






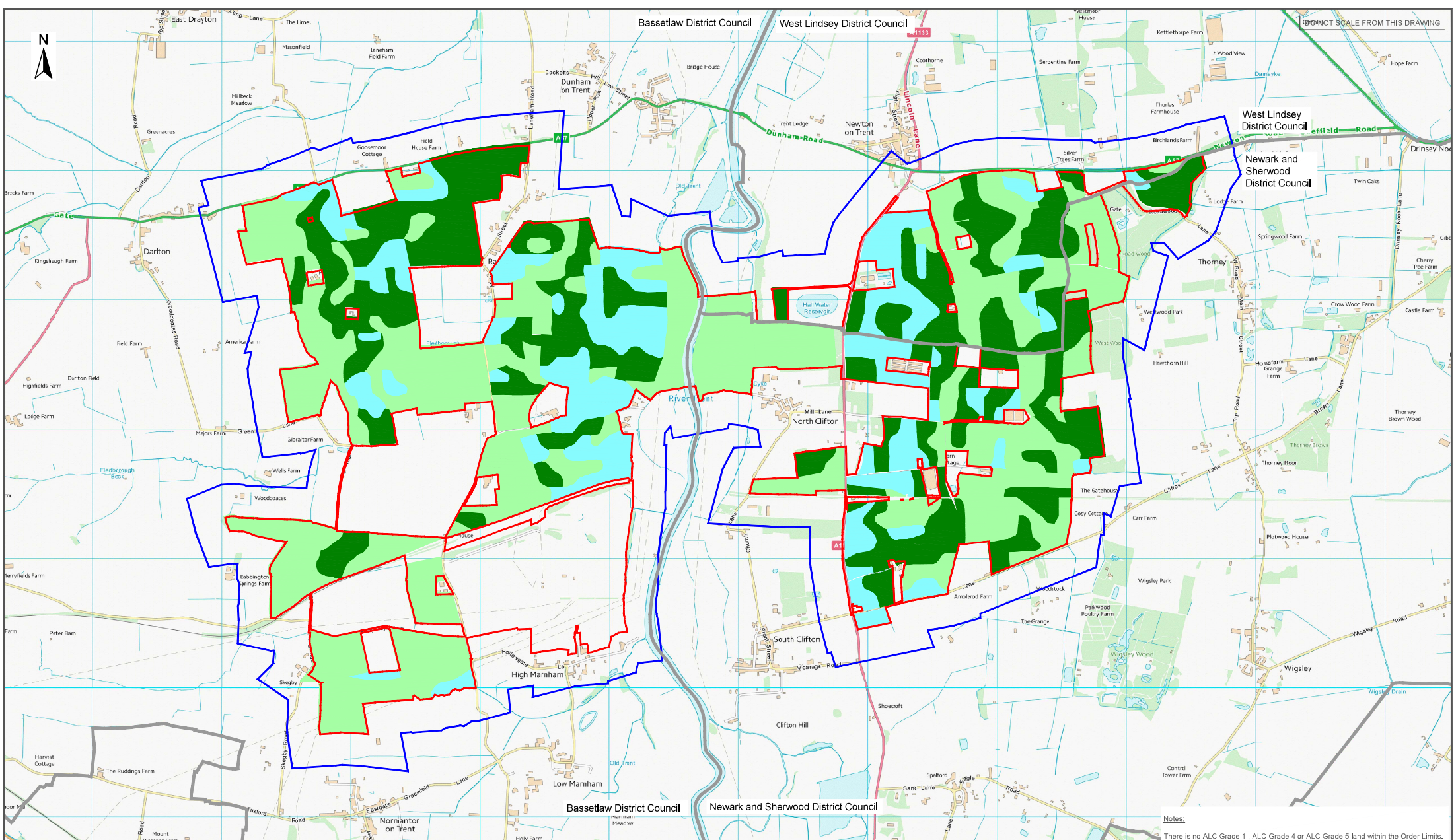
	Client	Drawing Title		<div>Legend:</div> <div><div></div> Order Limits</div> <div><div></div> Study Area (250m buffer outside Order Limits)</div> <div><div></div> Boundary of district borough unitary region</div> <div><div></div> Geological hazards from compressible ground (moderate risk)</div> <div>Superficial Deposits</div> <div><div></div> Alluvium - Clay, Silt, Sand and Gravel</div> <div><div></div> Holme Pierrepont Sand and Gravel Member - Sand and Gravel</div> <div><div></div> Blown Sand - Sand</div> <div><div></div> Till, Mid Pleistocene, Diamicton</div>
	One Earth Solar Farm Ltd	Figure 8.4 Superficial Geological Units and Geological Hazards		
	Project Name	Drawing Number	Revision	
	One Earth Solar Farm	EN010159/APP/6.20/8.4	C02	
	Planning Inspection Scheme Ref:EN010159	Drawing Date		
Environmental Statement Volume-2	10.02.2025			






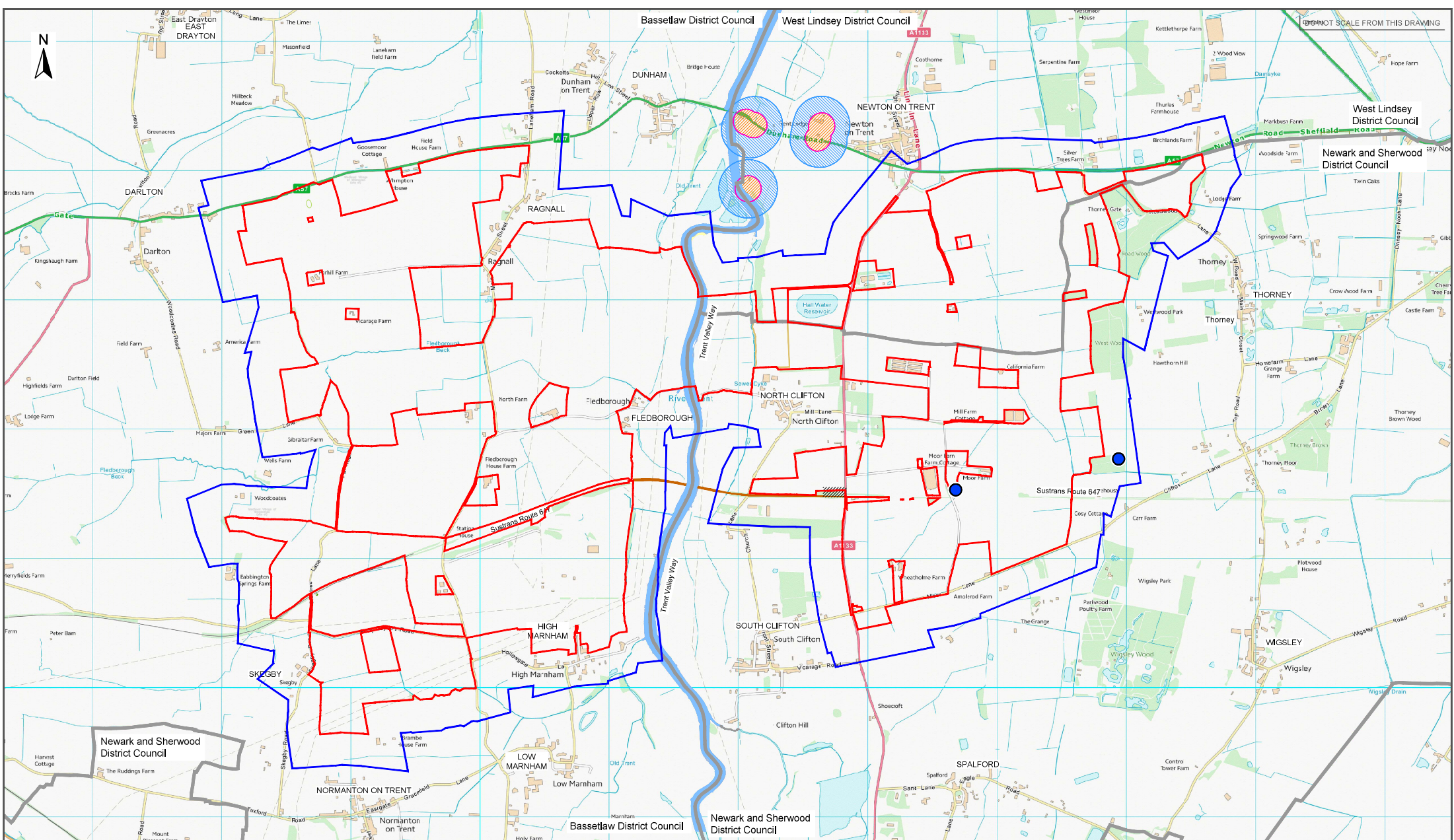
	Client  One Earth Solar Farm Ltd		Drawing Title  Figure 8.5 Mineral Extraction Sites and Mineral Safeguarding Areas		<div>Legend:</div> <div><div><div><div></div></div><div>Order limits</div></div><div><div><div></div></div><div>Study Area (250m buffer outside Order Limits)</div></div><div><div><div></div></div><div>Boundary of district borough unitary region</div></div><div><div><div></div></div><div>Mothballed quarry with permission for further sand and gravel extraction (Gilton)</div></div><div><div><div></div></div><div>Location of historical mineral site</div></div><div><div><div></div></div><div>Sand and Gravel Mineral Safeguarding and conciliation area .</div></div><div><div><div></div></div><div>PEDL: Petroleum exploration and development licence are; EXL: Exploration licence area</div></div></div> <div>Names of historical mineral site ( see section 8.4.25, Chapter 8, Environmental Statement Volume 2)</div> <div><div>1 - Station Sand Pit</div><div>2 - Windmill Pits</div><div>3 - Station Gravel Pit (1)</div><div>4 - Station Gravel Pit (2)</div><div>5 - Newton Cliff Quarries</div><div>6 - North Clifton Pits</div><div>7 - Hall Farm Pit</div></div>	
	Project Name  One Earth Solar Farm		Drawing Number  EN010159/APP/6.20/8.5			Revision  C02
	Planning Inspection Scheme Ref:EN010159		Drawing Date  10.02.2025			
	Environmental Statement Volume-2					






	Client		Drawing Title		<p>Legend:</p> <p><span style="color: red;">—</span> Order limits</p> <p><span style="color: blue;">—</span> Study Area (250m buffer outside Order Limits)</p> <p><span style="color: grey;">—</span> Boundary of district borough unitary region</p> <p><b>ALC Grades</b></p> <p><span style="background-color: #e0f0ff; border: 1px solid black; display: inline-block; width: 15px; height: 10px;"></span> 2</p> <p><span style="background-color: #c0ffc0; border: 1px solid black; display: inline-block; width: 15px; height: 10px;"></span> 3a</p> <p><span style="background-color: #a0ffa0; border: 1px solid black; display: inline-block; width: 15px; height: 10px;"></span> 3b</p>
	One Earth Solar Farm Ltd				
	Project Name		Drawing Number		
	One Earth Solar Farm				
	Planning Inspection Scheme Ref:EN010159		Revision		
Environmental Statement Volume-2		EN010159/APP/6.20/8.6		C02	
		Drawing Date			
		10.02.2025			





	Client		Drawing Title		<p>Legend:</p> <ul style="list-style-type: none"><li>Order limits</li><li>Study Area (250m buffer outside Order Limits)</li><li>Boundary of district borough unitary region</li></ul> <p><u>Groundwater abstraction source protection zones</u></p> <ul style="list-style-type: none"><li>Outer zone-subsurface activity only (Zone 2c)</li><li>Inner zone-subsurface activity only (Zone 1c)</li><li>Active groundwater abstraction points</li></ul>	<p>Notes:</p> <p>Data on groundwater abstraction points was provided by the Environment Agency (reference EIR2025/17939). Grid references were not provided for four Anglian Water abstraction points that are located outside the Order Limits but within 1km of the boundary, so it has not been possible to show the positions of these points on this drawing.</p>
	One Earth Solar Farm Ltd		Figure 8.7 Groundwater Abstraction Points			
	Project Name					
	One Earth Solar Farm		Drawing Number			
			EN010159/APP/6.20/8.7			
		Revision				
		P06				
Planning Inspection Scheme Ref:EN010159		Drawing Date				
		18.08.2025				
Environmental Statement Volume-2						